

SUMMARY OF CARBON ZERO CERTIFICATION

BLUETREE GROUP

Bluetree Design & Print Limited Trading as Bluetree Group meets the requirements of Carbon Zero certification having measured its greenhouse gas emissions in accordance with ISO 14064-1:2006, committed to managing and reducing its emissions and neutralised its remaining unavoidable emissions through the cancellation of an appropriate number of verified carbon credits in respect of the operational activities of its organisation.



Introduction¹

Bluetree Group are based in Wath upon Dearne in South Yorkshire. The Group has two main divisions, Bluetree Print and Bluetree Medical Division.

Bluetree Print operates as an online print solution, trading as Instant Print and Route1 Print, operating from 1 facility 24 hours a day 365 days a year.

Bluetree Medical Group is a Medical Device manufacturing business operating from one site with the aim of delivering effective, safe and innovative solutions to problems faced within the global healthcare market. Our mission is to build a “UK manufactured option” for high volume medical consumables for principal supply to the NHS.

Boundary

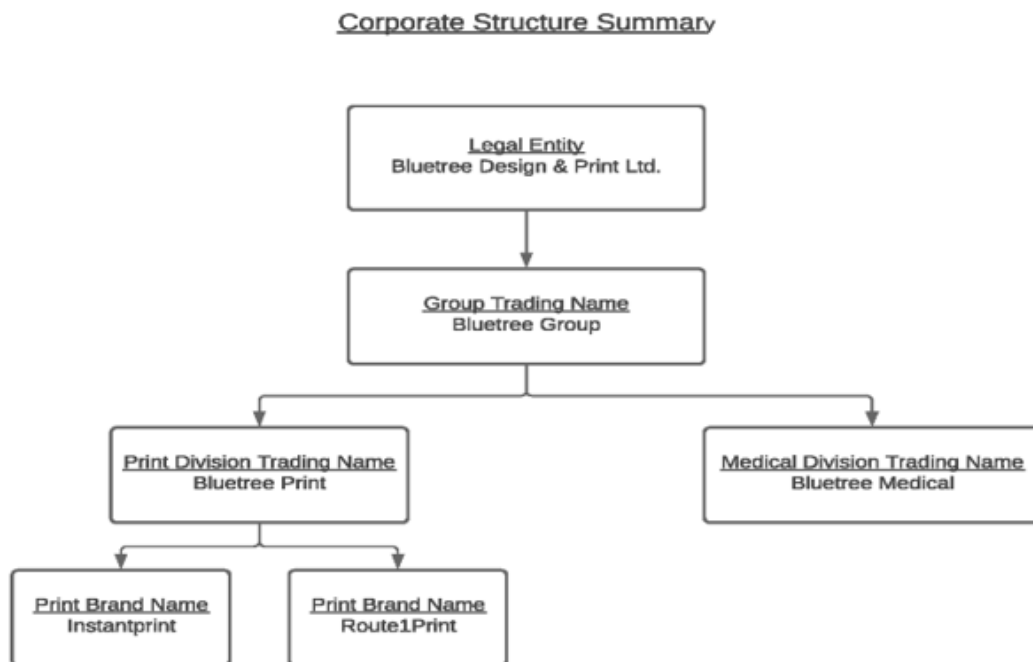


Figure 1: Organisational structure showing all business units included.

Consolidation approach

An operational control consolidation approach was used to account for emissions.

¹**Disclaimer:** This Disclosure Statement is a summary of the verified information considered for certification and the certification decision. It should not be taken to represent the full submission for certification. Whilst every effort has been made to ensure that the information in this Disclosure Statement is accurate and complete, Enviro-Mark Solutions Limited does not, to the maximum extent permitted by law, give any warranty or guarantee relating to the accuracy or reliability of the information.

Base year

01 May 2020 to 30 April 2021

Measurement period

01 May 2020 to 30 April 2021

Emissions source inclusions

The operational GHG emissions for the organisation by emissions source are shown in Figure 2 below.

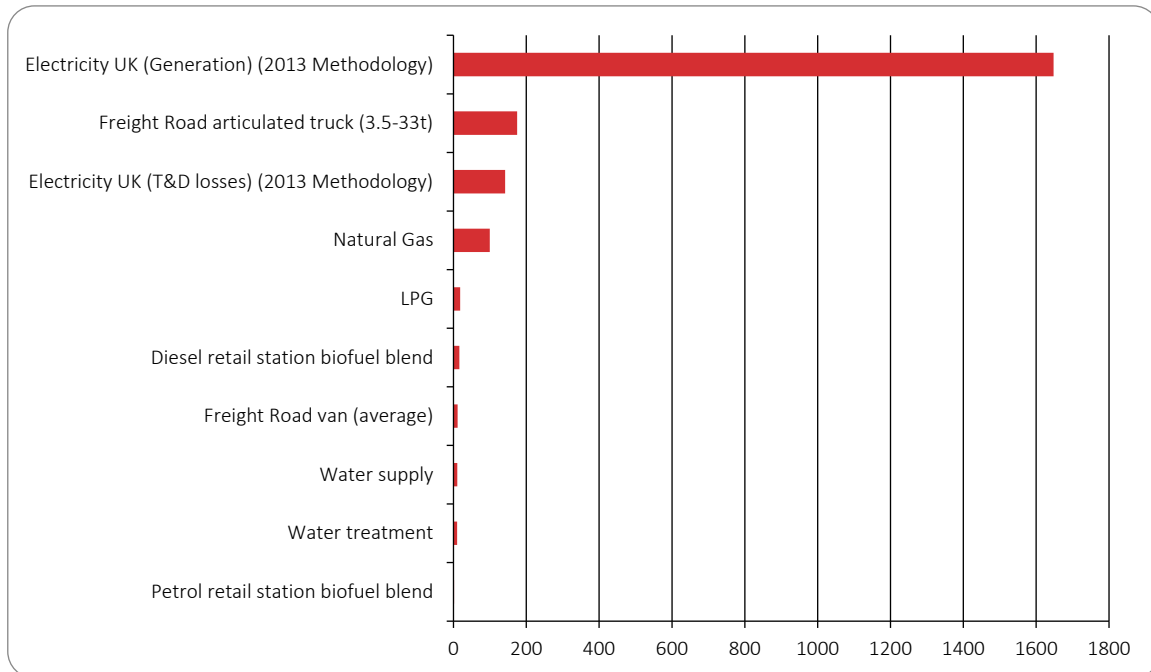


Figure 2: GHG emissions by emissions source.

Emissions as tonnes of carbon dioxide equivalents (tCO₂e) for this period were:

Scope	tCO ₂ e
Scope 1	147.49
Scope 2	1,647.72
Scope 3 Mandatory	337.23
Scope 3 Additional	0.00
Scope 3 One time	0.00
Total gross emissions	2,132.44

Emissions source exclusions

The following emissions sources were excluded from the inventory for this measurement period:

Business unit	GHG emissions source	GHG emissions level scope	Reason for exclusion
	Business travel by air rail, bus taxi	Scope 3	Less than 1% of total inventory.
	HFC,s from AC	Scope 1	Less than 1% of total inventory.

Emissions reduction commitments

A GHG emissions management plan and reduction targets have been developed.

Bluetree Group has set a Group level Objective of achieving Net Zero in our Carbon emissions for the year 2030 and all years thereafter.

Scope of target	Target	Baseline (tCO ₂ e)	Target date
Reduce purchased electricity emissions	60% reduction	1,648	31/12/2022
Reduction of Freight Road travel emissions for deliveries	60% reduction	186	31/12/2022
Generate a proposal for which Non-Mandatory Scope 3 emissions Bluetree considers relevant to its operation and control, for consideration in the Second Phase of the Reduction Plan.	NA	NA	31/12/2022

Offsets

2,133 credits comprised of 2,132 Prony Kareate Wind-Farms and 1 #290c International set portfolio have been cancelled on the Toitū Envirocare register and will be cancelled (or equivalent) on the relevant external registry within one month of certification. Specific details of cancellation, including serial numbers, will be available on the external registries: <https://registry.verra.org/> and <https://registry.goldstandard.org/credit-blocks>

Verified by

Achilles Assessment Services

Data quality score

High

Threshold of materiality

Excluded emissions do not exceed 5% of the total footprint for organisation stated.

Level of assurance

Limited

Certification status

Carbon Zero certified organisation

Certificate number

2021180J

Valid until

05 November 2022



Unit A, Brookfields Park, Manvers Way, Wath upon Dearne, Rotherham S63 5DR, United Kingdom
 +441709 382 202